

WOLF PACK

BY FOREST RIVER

WOLF PACK

BY FOREST RIVER



19WP in Earth Tan

All Wolf Packs are Wide Body 102" for a spacious interior and extra room for all the TOYS you may want to bring along. Notice the Rear King Dinette and contemporary lounge sofas. They are also equipped with a front bed to accommodate a variety of sleeping arrangements.

The 19WP also offers a front bath so you can optimize on cargo space. The bathroom offers ample storage space.



As you can see above the Wolf Pack comes with more than the usual standard features to ensure a great time. And the trailers are all half-ton towable.

Our spacious and clean looking interiors allow for a variety of entertainment options after you arrive at your destination.



Notice how we've utilized the space throughout to maximize travel storage as well as daily storage with our oversized cabinetry.



Whether you're hauling motorcycles, ATV's, golf carts or Rhinos we have you covered in our 1/2 ton series Wolf Packs.



306WP in Earth Tan

Wolf Pack Fifth Wheels are the ultimate toy haulers at a great price point loaded with TONS of industry firsts. Observe the HUGE sitting space displayed.

Coming home to this spacious floorplan after a long fun day on your favorite toy will be relaxing and accommodating for the entire family. Movie time on the HUGE LCD TV with plenty of lounging space is an enjoyable experience for everyone.



The Wolf Pack Fifth Wheels all feature a rear cargo room or garage that can be converted to an outdoor dining room or a second bedroom.



WOLF PACK FEATURES



Notice the walk around bed, storage, and lighting that are the character of all our 5th wheels no matter which floorplan you like best. The front storage is washer and dryer ready.



The Wolf Pack lineup brings many of the same things that you love about home along with you when you travel. Features such as solid surface countertops, pull out faucet, breakfast bar, dinette skylights in slide models, full extension roller drawer guides and a water filtration system all add to that residential feeling.



A



D



B



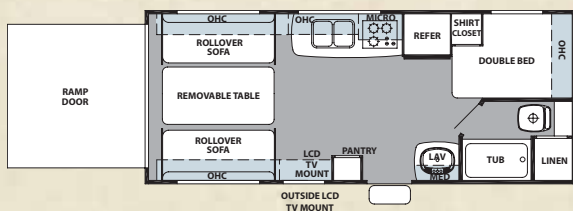
C

- A. **Pull-Out Faucet**
- B. **Metal Drawer Guides**
- C. **Water Filter (Optional)**
- D. **Screen Wall / Tent Wall (Optional)**

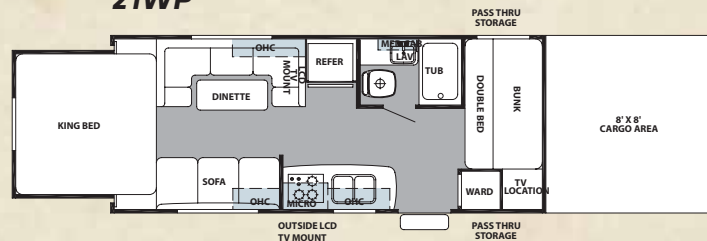


WOLF PACK TRAVEL TRAILER FLOORPLANS

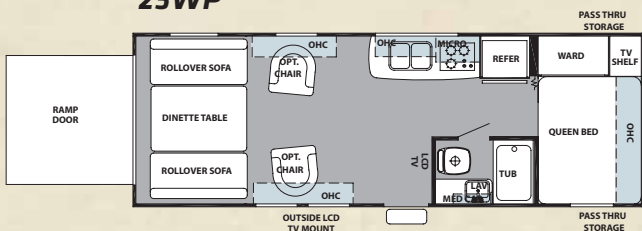
19WP



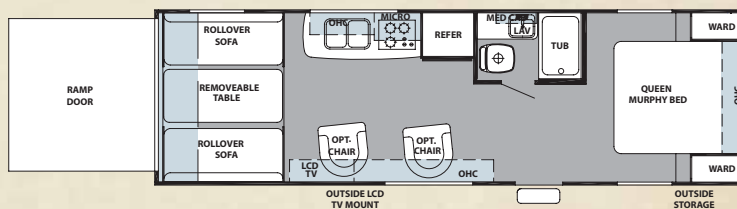
21WP



23WP



27WP



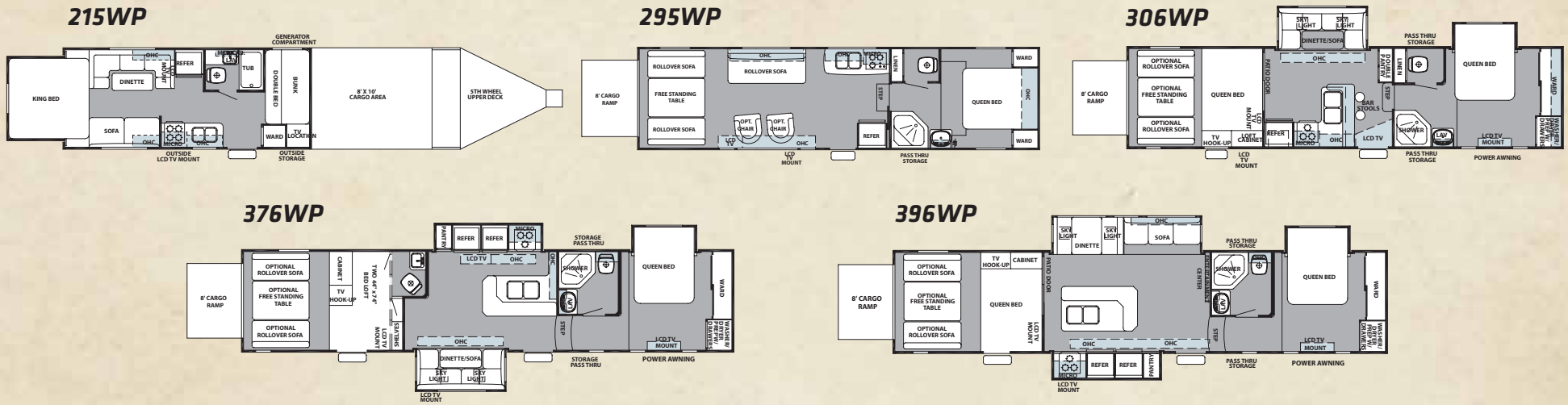
TRAVEL TRAILERS

	T19WP	T21WP	T23WP	T27WP
Dry Hitch Weight	668 lbs	604 lbs	865 lbs	930 lbs
Unloaded Vehicle Weight	5262 lbs	5993 lbs	5616 lbs	5639 lbs
Cargo Carrying Capacity	2368 lbs	1611 lbs	2215 lbs	2253 lbs
Exterior Length	24'-11"	33' 5"	28'-9"	31'
Exterior Height w/ AC	11'-1"	10'-9"	11'-1"	11'-7"
Exterior Width	102"	TBA	102"	102"
Bedroom Interior Height	78"	TBA	78"	76"
Grey Capacity	41 gal	TBA	41 gal	41 gal
Black Capacity	31 gal	TBA	41 gal	31 gal
Fresh Capacity	50 gal	TBA	100 gal	104 gal
Cargo Area Size-Off DS	TBA	TBA	140"	84"
Cargo Area Size-DS	TBA	TBA	174"	269"
Storage Height	84"	TBA	84"	93"

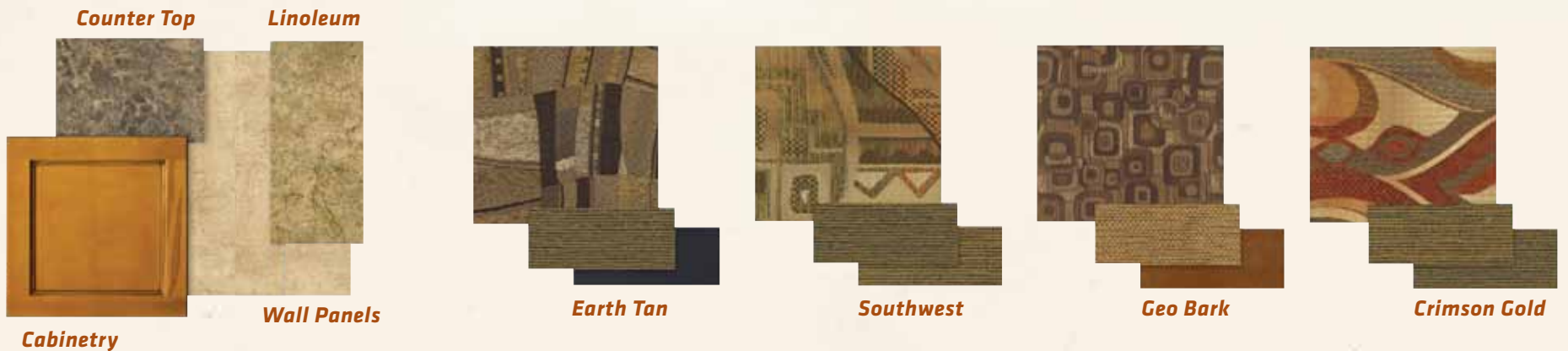
FIFTH WHEELS

	F215WP	F295WP	F306WP	F376WP	F396WP
Dry Hitch Weight	825 lbs	TBA	2358 lbs	2646 lbs	2664 lbs
Unloaded Vehicle Weight	7598 lbs	TBA	10726 lbs	12339 lbs	12630 lbs
Cargo Carrying Capacity	6773 lbs	TBA	6814 lbs	5488 lbs	5274 lbs
Exterior Length	39' 8"	33'-2"	36' 5"	41'-2"	40'-10"
Exterior Height w/ AC	10' 10"	11'-10"	13'-4"	13'-4"	13'-4"
Exterior Width	102"	102"	102"	102"	102"
Bedroom Interior Height	N/A	72"	76"	76"	76"
Grey Capacity	41 gal	41 gal	41 gal	41 gal	41 gal
Black Capacity	41 gal	41 gal	41 gal	41 gal	41 gal
Fresh Capacity	50 gal	104 gal	100 gal	100 gal	104 gal
Cargo Area Size-Off DS	99"	TBA	132"	146"	146"
Cargo Area Size-DS	99"	TBA	132"	146"	146"
Rear Storage Height	Unlimited	92"	102"	102"	75"

WOLF PACK FIFTH WHEEL FLOORPLANS



WOLF PACK INTERIOR DECOR



WOLF PACK STANDARDS + OPTIONS

STANDARD FEATURES

- Industry Exclusive Extra Large Dinettes
- 102" Wide
- Aluminum Ramp Door
- 750 lb. Flush Floor Mounts
- Exterior Speakers
- Breakfast Bar (Select Floorplans)
- 13.5 BTU High Efficiency A/C
- Awning
- Cable and Satellite Ready
- Front Rack Generator Location
- 110 Gallon Fresh Water (Most Models)
- Black Tank Flush
- 3 Burner Range
- Pull Out Faucet
- Radius Countertops
- Double Shelves Cabinets (5ths only)
- Extra Large Axles
- Stabilizer Jacks
- Turbo 6 Gal. Gas/Electric DSI Water Heater
- 3/8" Walkable Roof Decking
- Radius Truss Roof Rafters
- Full 5/8" Tongue and Groove Plywood Floor
- Powder Coated Frame
- Extra Large Safety Glass Windows
- Exterior Sewer Hose Holder Under Mount
- TV Antenna and Booster
- Fiberglass Radius Entry Door
- Sealed Floor
- Water Heater Bypass
- Double Step/Triple Step (5th wheel)
- Window Treatments
- Rain Gutter & Down Spouts
- LP Leak Detector

- Upgraded Cabinet Handles
- Coat Hooks
- Main Bed Designer Mattress
- Aluminum Rims & Radial Tires
- Illuminated Lighting Switch (trailers)
- Command Center (5th Wheels)
- Full Extension Drawer Guides
- Medicine Cabinet
- Dual LP Bottles
- Clock
- Stereo/CD/DVD with iPod Hookup
- Carbon Monoxide Detector

AVAILABLE OPTIONS

- Gel Coat Sidewalls
- Gel Coat Cap and Sidewalls (5ths only)
- Large Exterior Folding Assist Grab Handle
- Ceiling Fan 12 Volt
- Executive Chair
- Raised 6 Panel Refer Insert
- Night Shades
- LCD Flat Screen TV
- Sink Cover
- Range Cover
- 10 Gal. Gas/Elec. DSI Water Heater
- Heated Holding Tanks
- Power Awning
- 15K Air Conditioner
- Screen Wall / Tent Wall
- 3500 Portable Generator with Remote Start
- Hide a Rear Screen Wall
- Rear Ladder
- Diamond Plate Black Rubber Flooring

- Power Bed
- Sprayer Hose
- Upgraded Flooring
- Convection Microwave
- Axle Upgrade for Trailers

SOUTHWEST PACKAGE

- Spare Tire and Carrier
- Spare Light (Rear)
- Gas Pump Fuel Station w/ Generator Direct
- Sky Light Over Tub
- Removable Edged Carpet
- Fuel Timer w/ Emergency Cut-Off



PEACE OF MIND.

Forest River has yet another exclusive feature to offer: **One year of free roadside assistance will be given to every 2010 Wolf Pack customer. This is just one more way to say "Thank you" and to ensure an enjoyable traveling experience.**

FOREST RIVER ENCOURAGES YOU TO

BUY LOCALLY

FROM YOUR HOMETOWN DEALERSHIP.

Forest River, Inc. strongly encourages our retail customers to purchase from their local dealership whenever possible due to the following factors:

- Our Dealers are as a rule, independently owned and operated businesses. Outside of those customers they personally sold products to, they are not contractually obligated to perform warranty service on Forest River products that were purchased elsewhere. There may be an occasion that you would be required to return to the point of purchase to satisfy warranty requirements.
 - Although many dealerships will eventually service products not purchased at their place of business, they will usually take care of their customers and other Forest River customers who are traveling away from their local dealer as they would their own.
 - Local purchases allow a customer to establish a relationship with a dealer close to home. This relationship provides the customer with a convenient location for service and support from a "home town" professional.
 - The opportunity for a thorough PDI (Pre Delivery Inspection) and product orientation is an additional benefit of buying from your local dealer. Further providing the opportunity for refresher courses or the ability to get questions answered much more conveniently.
 - For our Canadian customers, there are also requirements which must be met to bring an RV purchased out of the country to their home. Although not insurmountable, these requirements may involve such things as additional inspections and certifications, taxes and fees. Your local Canadian Dealer is a professional at meeting these requirements.
- Forest River's goal is for all RV Owners to fully enjoy their RV experience. In light of this goal, and considering the advantages of buying local, we encourage you to be thorough when determining what product to purchase and which dealer to purchase it from as both are key to your ultimate satisfaction and the realization of your dreams.

YOUR WOLF PACK DEALER



Forest River, Inc. 402 Lehman Avenue, Topeka, IN 46571
www.forestriverinc.com/wolfpack
www.forestriveraccessories.com

All illustrations and specifications contained in this literature are based on the latest product information at time of publication. Forest River reserves the right to make changes in prices, colors, materials, equipment and specifications at anytime without notice and assumes no responsibility for any error in this literature. All units are shipped F.O.B. Goshen, Indiana.

CONSULT YOUR LOCAL DEALER FOR WARRANTY INFORMATION. LITHO: U.S.A. FOR 0852